

16/24

# DUKE ELLINGTON!

(A MEDLEY FOR ORCHESTRA)

Property of  
Muscatine Symphony  
Orchestra

3rd Bb TRUMPET

"Don't Get Around Much Anymore" By DUKE ELLINGTON and BOB RUSSELL

"Do Nothin' 'Till You Hear From Me" - Lyric by BOB RUSSELL

Music by DUKE ELLINGTON

"Sophisticated Lady" - By IRVING MILLS, MITCHELL PARISH and DUKE ELLINGTON

"It Don't Mean A Thing (If It Ain't Got That Swing)" -

By IRVING MILLS and DUKE ELLINGTON

Arranged by CALVIN CUSTER

Grandioso



Moderate swing

8 "Don't Get Around Much Anymore"



16



mf

24



32



2



C0270B7X

"Don't Get Around Much Anymore" - Copyright © 1942 (Renewed 1969) ROBBINS MUSIC CORPORATION  
All Rights of ROBBINS MUSIC CORPORATION Assigned to EMI CATALOGUE PARTNERSHIP  
All Rights Controlled and Administered by EMI ROBBINS CATALOG, INC.

"Do Nothin' 'Till You Hear From Me" - Copyright © 1943 (Renewed 1971) ROBBINS MUSIC CORPORATION  
All Rights of ROBBINS MUSIC CORPORATION Assigned to EMI CATALOGUE PARTNERSHIP  
All Rights Controlled and Administered by EMI ROBBINS CATALOG, INC.

"Sophisticated Lady" - Copyright © 1933 by FAMOUS MUSIC CORPORATION and MILLS MUSIC, INC.  
Copyright Renewed 1960 and assigned to FAMOUS MUSIC CORPORATION and MILLS MUSIC, INC.

"It Don't Mean A Thing (If It Ain't Got That Swing)" - Copyright © 1932 by FAMOUS MUSIC CORPORATION and MILLS MUSIC, INC.  
Copyright Renewed 1959 and assigned to FAMOUS MUSIC CORPORATION and MILLS MUSIC, INC.

International Copyright Secured Made in U.S.A. All Rights Reserved

3rd B $\flat$  Trumpet - 2

42

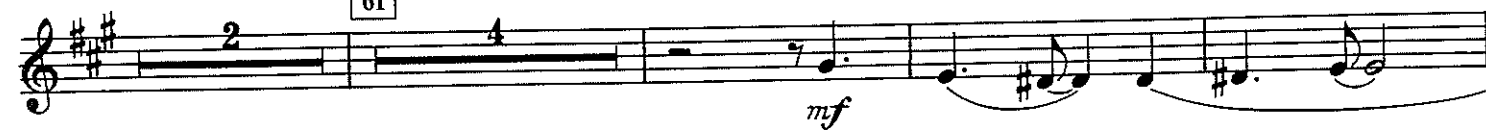


"Do Nothin' 'Till You Hear From Me"  
A bit slower

53



61



69



Moving ahead a bit



"Sophisticated Lady"

Moderate ballad tempo (freely)

87



95



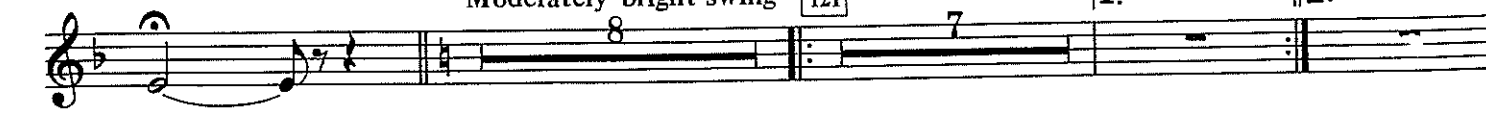
103



"It Don't Mean A Thing  
(If It Ain't Got That Swing)"

Moderately bright swing

121



3rd Trumpet - 3

130 *mf*

138 *f*

146

154

162 Dixieland (2-beat) style

170 *f*

178 (Swing 4) *ff*

186 *f*

194 *ff*

Detailed description: This page contains ten staves of musical notation for the 3rd Trumpet part. The music is written in treble clef with a key signature of one flat (B-flat). The score includes various musical notations such as slurs, accents, and dynamic markings. Measure numbers 130, 138, 146, 154, 162, 170, 178, 186, and 194 are indicated in boxes. The dynamics range from mezzo-forte (mf) to fortissimo (ff). The style is identified as Dixieland (2-beat) and Swing 4. The notation includes eighth notes, quarter notes, and half notes, with some measures containing rests and slurs.